

SERVICE  
GUIDE

03

# Environmental Assessments

Making a statement



**LICHFIELDS**

**LICHFIELDS**

# **Lichfields is the pre-eminent planning and development consultancy in the UK**

We've been helping create great spaces  
for over 50 years.

**lichfields.uk**

**Cover images**

Top left: The Co-operative Group HQ

© Mark Waugh / Alamy Stock Photo

Top right: 3,000 homes at Callerton

© Pod

Bottom: Port of Tyne

© Commission Air / Alamy Stock Photo



# Environmental Assessments

With environmental and sustainability considerations at the forefront of many planning decisions, delivering a robust Environmental Assessment is paramount to the success of many large-scale projects. We have a long standing and proven track record across a wide range of sectors.



© Cultura Creative (RF) / Alamy Stock Photo



## Our approach

Delivering clear, concise and legally robust Environmental Assessments

Competent experts in each office delivering within recognised quality assurance systems

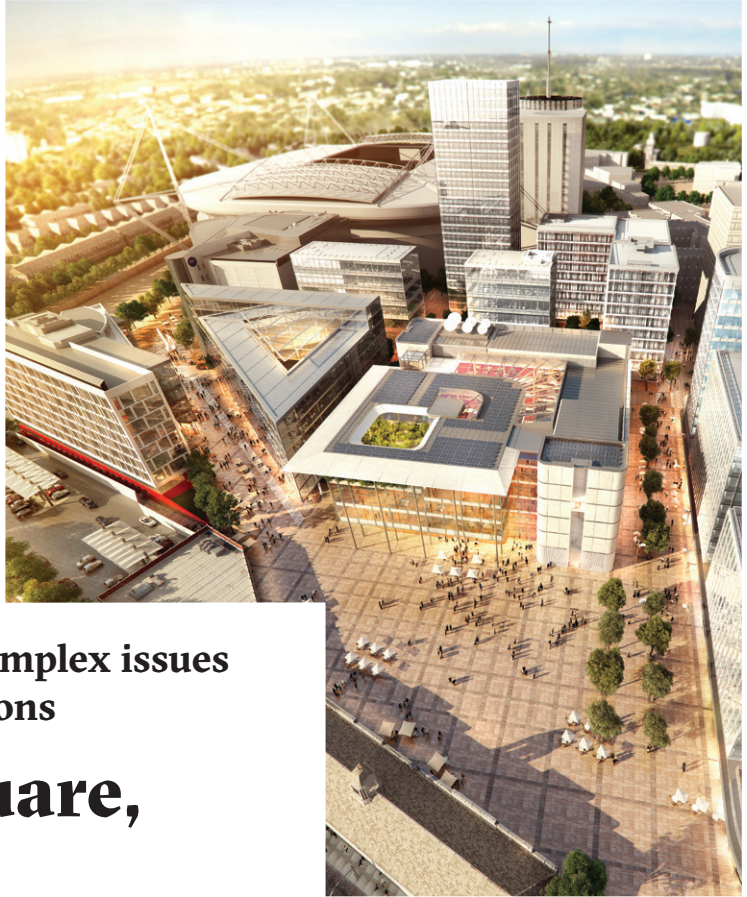
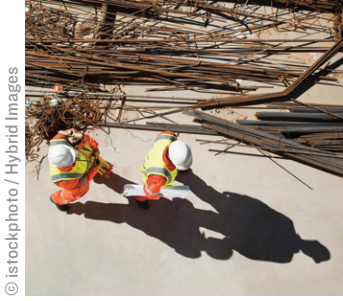
Comprehensive understanding of the latest legislation, case law and best practice

A carefully scoped approach for each individual project

Strong and responsive project management skills

Ability to provide a range of specialist technical services





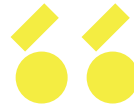
**Bringing together complex issues  
in high profile locations**

# Central Square, Cardiff

Managing a large multi-disciplinary team, we worked closely with Foster + Partners to masterplan the regeneration of Cardiff's Central Square and transform visitors' first impressions of the city when alighting at Central Station. The development comprises a new transport interchange, the new BBC Wales Headquarters and the Cardiff University Media School, centred on a new public square.

**Client**  
Rightacres Property Ltd

**Technical services**  
Consultation, Daylight  
& Sunlight, Heritage,  
Socio-economics,  
Townscape & Visual  
Impact



**It's enormously rewarding  
to play a part in such a  
prestigious development  
and one which will  
transform Cardiff's Central  
Square - the Gateway to  
Wales.**

John Cottrell  
Senior Director, Lichfields



© Matthew Clarke

**Focus on long term delivery objectives**

# DIRFT

We have been involved in Daventry International Rail Freight Terminal from its origins in the early 1990s. Most recently we co-ordinated the Environmental Assessment for the third phase of the rail freight terminal - a Nationally Significant Infrastructure Project - and an adjoining urban extension of 6,000 new homes. The location is the site of the former Rugby Radio Station – from where the very first transatlantic radio communications between the UK and the US originated.

**Client**  
Prologis

**Technical services**  
Consultation,  
Development  
Consent Orders,  
Socio-economics







© istockphoto / slivivolk



© Planit IE

## Woodford Aerodrome, Stockport

Facing intense scrutiny from local interest groups, councillors and other key stakeholders, the Environmental Assessment was a prominent and informative element in the consultation process.



© www.padam.com

## The Co-operative Group HQ, Manchester

We provided technical services covering heritage, visual impact and socio-economic considerations on this key city centre site and delivered a robust Environmental Assessment within very tight timescales.

## Identifying the need for Environmental Assessment

Our robust and considered approach to screening with local authorities and the Secretary of State removed the need to progress assessments for sites in Kirkby, Skipton and East London, where significant effects were concluded to be unlikely.



© UK Stock Images / Alamy Stock Photo



## Chobham Farm

We have been supporting the phased comprehensive regeneration of land next to the Olympic Park through the co-ordination of the Environmental Assessment process and assessment of daylight and sunlight, and socio-economic, heritage and townscape effects.



© Pollard Thomas Edwards

## Howdon Green Energy Park

Working ahead of the appointment of a gasification technology partner, our approach to the Environmental Assessment focused on the main and relevant issues to secure a deliverable permission for the future operator of the site.



© Cultura Creative (RF)



## St George's Park, Burton-upon-Trent

Early engagement and upfront scoping assisted in refining the matters to be addressed as part of the Environmental Assessment of the national football centre for training and coaching (now 'St George's Park'), co-ordinated on behalf of the Football Association.



© Paul White Aerial views

## Contacts

Speak to your local office or visit our website.

### Bristol

Andrew Cockett  
andrew.cockett@lichfields.uk  
0117 403 1980

### Cardiff

Liz Evans  
liz.evans@lichfields.uk  
029 2043 5880

### Edinburgh

Nicola Woodward  
nicola.woodward@lichfields.uk  
0131 285 0670

### Leeds

Justin Gartland  
justin.gartland@lichfields.uk  
0113 397 1397

### London

Nicki Mablesen  
nicki.mablesen@lichfields.uk  
020 7837 4477

### Manchester

Nathan Matta  
nathan.matta@lichfields.uk  
0161 837 6130

### Newcastle

Kate McGill  
kate.mcgill@lichfields.uk  
0191 261 5685

### Thames Valley

Daniel Lampard  
daniel.lampard@lichfields.uk  
0118 334 1920