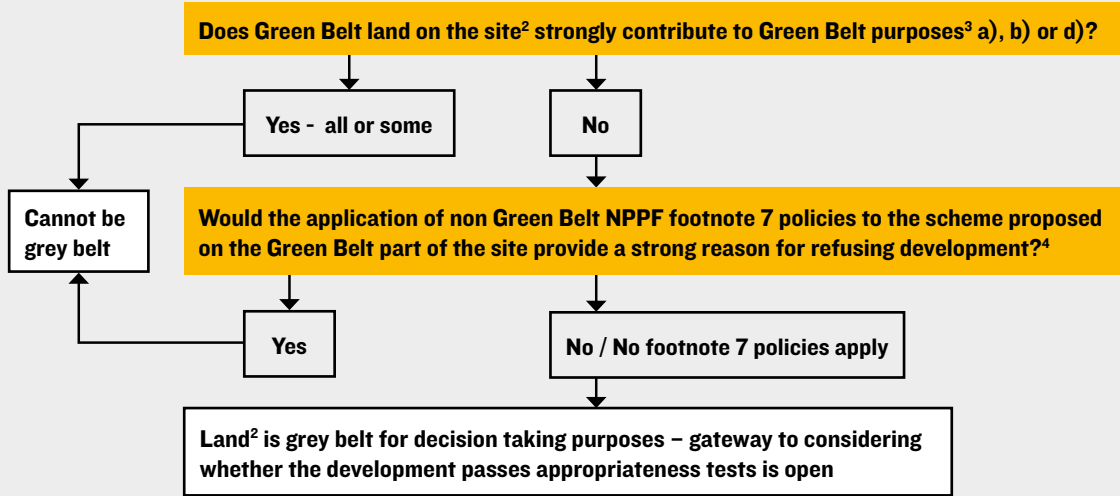
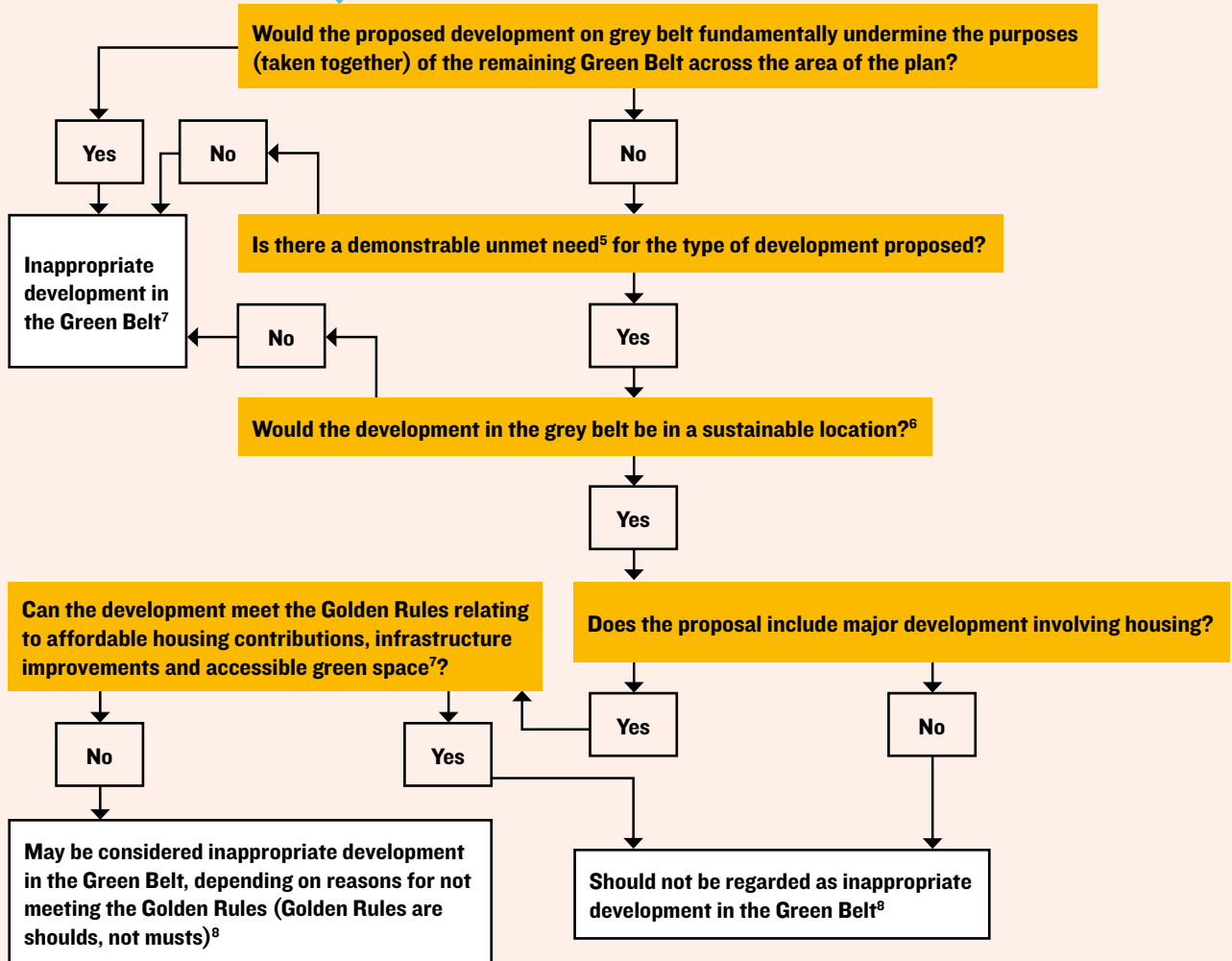


Assessments needed for decision taking purposes<sup>1</sup> to determine i) if Green Belt land is grey belt and ii) if the development proposed in the grey belt should not be regarded as inappropriate development in the Green Belt

Grey belt tests (relating to the land/development)



Appropriateness tests (relating to the development)



<sup>1</sup> There is a different approach to determining whether land is grey belt for plan-making purposes. <sup>2</sup> Green field sites that are not in the Green Belt cannot be considered grey belt. If a site is part Green Belt and part not, the Green Belt part could be considered grey belt. <sup>3</sup> Green Belt purposes set out at [para 143](#). <sup>4</sup> Grey belt excludes land where the application of the policies relating to the areas or assets in footnote 7 (other than Green Belt) would provide a strong reason for refusing or restricting development. "Restricting" likely applies to the consideration of 'grey belt' in a plan-making (see NPPF [para 11](#)). <sup>5</sup> For the measure of demonstrable unmet need housing see [footnote 56](#). No measure for non-residential development. <sup>6</sup> Refer to NPPF [paras 110 and 115](#) re sustainable growth patterns and transport, and safe, well-designed development. <sup>7</sup> Refer to NPPF [paras 156-159](#) for the Golden Rules. <sup>8</sup> This flowchart provides a high level overview of whether a site is likely to be categorised as grey belt and whether development on such land is likely to be regarded as not inappropriate in the Green Belt. It does not account for all potential circumstances. Lichfields would be pleased to provide site-specific advice or guidance, if required.

Subject to considering other Green Belt chapter paragraphs regarding not inappropriate development, need to carry out appropriateness tests, to seek to establish that the grey belt land proposal is not inappropriate. Development that is not inappropriate does not need to demonstrate very special circumstances or certain harm tests as set out in [para 153](#), in the determination of a planning application.